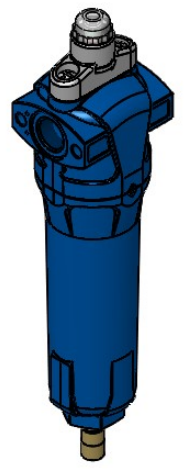
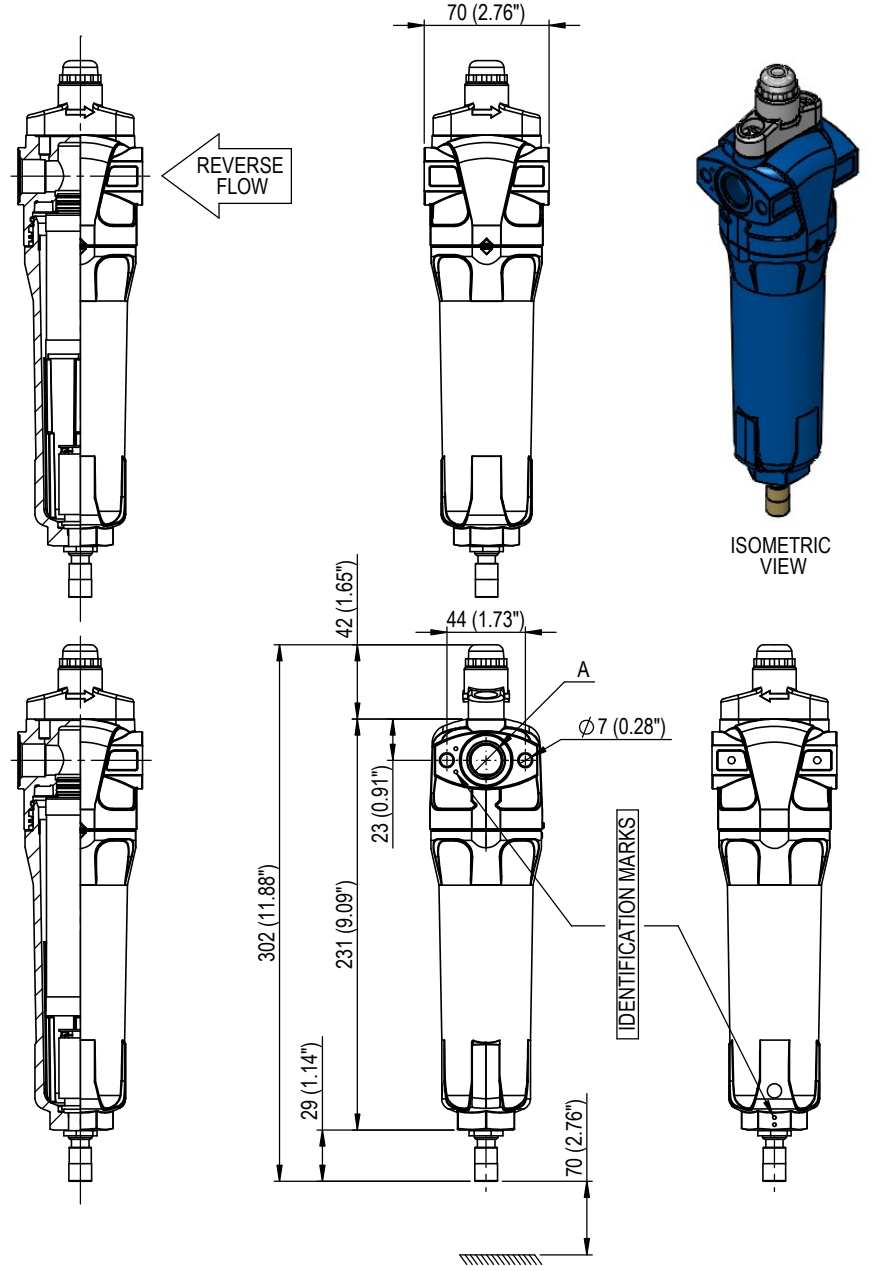
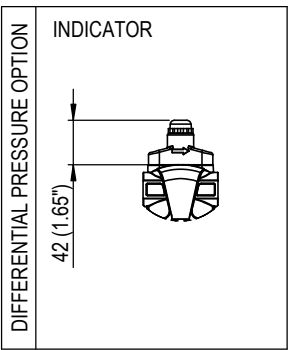
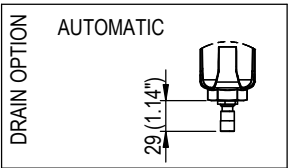


GENERAL PROPERTIES	
GOVERNING DIRECTIVE:	
DIRECTIVE 2014/68/EU	
OE19418.5C	
CONFORMITY ASSESSMENT CATEGORY:	
S.E.P	
MATERIAL OF CONSTRUCTION:	
HEAD - CAST ALUMINIUM EN BS1490 LM6	
BOWL - CAST ALUMINIUM EN BS1490 LM6	
UNIT VOLUME:	
0.3 LITRE (18.3 in³)	
GAS TYPE:	
COMPRESSED AIR - GROUP 2	
UNIT MASS:	
0.6 Kg (1.32lb)	
FILTER MODEL OPTIONS (ELEMENT MODEL):	
A3031 (E30408)	
PORT SIZE (A):	
3/8"	
FLOW RATE:	
54 Nm³/h (32 SFCM)	
PORT THREAD OPTIONS:	
NPT	
Nº OF IDENTIFICATION MARKS:	
1	
DRAIN PORT OPTIONS:	
AUTOMATIC	
MAXIMUM ALLOWABLE WORKING PRESSURE:	
16 barg (232 psig)	



FILTER GRADE	FLOW DIRECTION	PARTICLE REMOVAL	MAX OIL CARRYOVER AT 20°C		MAX PARTICLE SIZE CLASS*	MAX OIL CONTENT CLASS*	PRESSURE LOSS - CLEAN & DRY	PRESSURE LOSS - SATURATED	MAX TEMP - SEMI + AUTOMATIC DRAIN	MAX TEMP - MANUAL DRAIN	END CAP COLOUR	GAUGE / INDICATOR AS STANDARD
XA	N	0.01µm	0.01mg/m³	0.01ppm	1	1	85mbar (1.2psi)	125mbar (1.8psi)	80°C (176°F)	120°C (248°F)	BLU	Y

* CLASS IN ACCORDANCE WITH ISO8573-1:2010
** FLOW DIRECTION VISUALLY INDICATED ON FILTER HOUSING