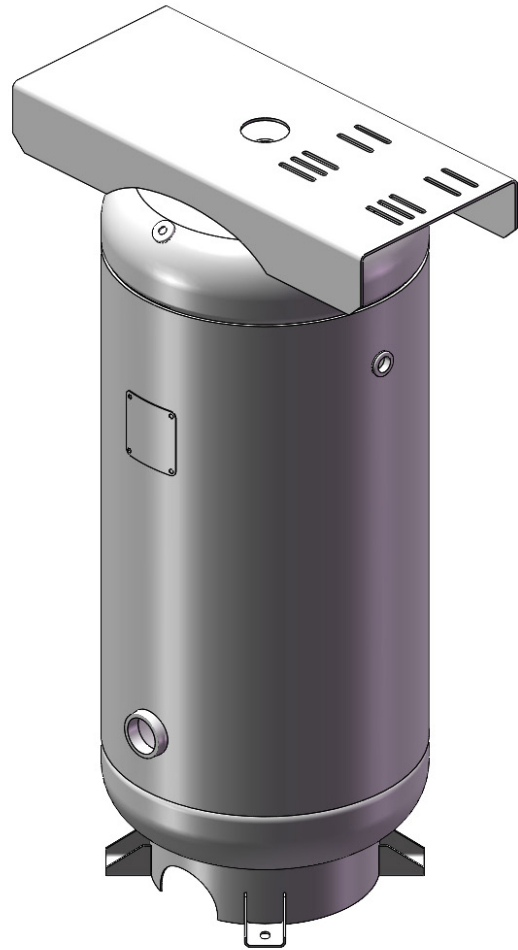
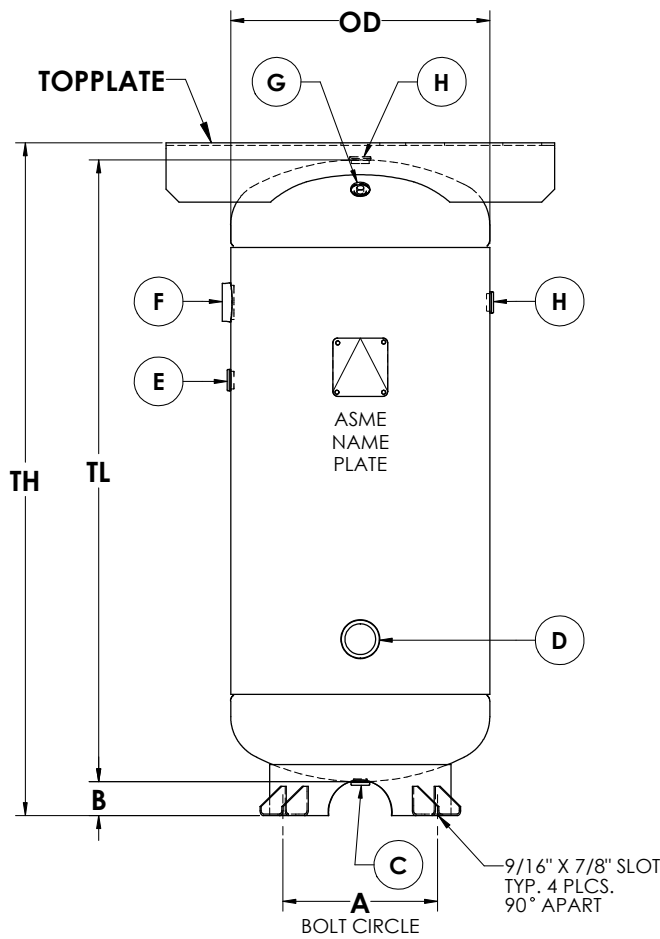


# Vertical Air Receivers / 10-120 Gallons



Pressure Vessel & Air Receiver drawings available for download, visit [manchestertank.com](http://manchestertank.com).

NOM CAP		Part #	MAWP	Top Plate	TW*	DIMENSIONS IN INCHES					NPT OPENINGS					
Gal	Cu Ft					OD	TL	TH	A	B	C	D	E	F	G	H
10	1.34	302400	200	NONE	37	10	30	32.38	11.25	2.38	1/2	N/A	N/A	3/4	1/4	3/4
10	1.34	302401	300	NONE	42	10	30	32.38	11.25	2.38	1/2	N/A	N/A	3/4	1/4	3/4
15	2.01	302402	200	NONE	48	12	33	35.38	12.75	2.38	1/2	N/A	N/A	3/4	1/4	3/4
15	2.01	302403	300	NONE	62	12	33	35.38	12.75	2.38	1/2	N/A	N/A	3/4	1/4	3/4
20	2.67	302404	200	NONE	59	14	33	35.25	15.00	2.25	1/2	1 1/2	N/A	1 1/2	1/4	3/4
20	2.67	302405	300	NONE	93	14	33	35.25	15.00	2.25	1/2	1 1/2	N/A	1 1/2	1/4	3/4
30	4.01	302406	200	NONE	85	16	38	40.81	15.00	2.81	1/2	1 1/2	3/4	1 1/2	1/4	3/4
30	4.01	302407	300	NONE	112	16	38	40.81	15.00	2.81	1/2	1 1/2	3/4	1 1/2	1/4	3/4
30	4.01	302408	200	.18 X 10 X 24	107	16	38	41.81	15.00	2.81	1/2	1 1/2	3/4	1 1/2	1/4	3/4
30	4.01	302409	300	.18 X 10 X 24	134	16	38	41.81	15.00	2.81	1/2	1 1/2	3/4	1 1/2	1/4	3/4
60	8.02	302410	200	NONE	156	20	48	50.69	17.00	2.69	1/2	2	3/4	2	1/4	3/4
60	8.02	302411	300	NONE	240	20	48	50.63	17.00	2.63	1/2	2	3/4	2	1/4	3/4
60	8.02	302412	200	.18 X 13.5 X 30	190	20	48	52.00	17.00	2.69	1/2	2	3/4	2	1/4	3/4
60	8.02	302413	300	.18 X 13.5 X 30	273	20	48	52.00	17.00	2.63	1/2	2	3/4	2	1/4	3/4
80	10.70	302414	200	NONE	200	20	63	65.56	17.00	2.56	1/2	2	1 1/4	2	1/4	1 1/4
80	10.70	302415	300	NONE	303	20	63	65.75	17.00	2.75	1/2	2	1 1/4	2	1/4	1 1/4
80	10.70	302417	200	NONE	220	24	46	49.19	21.00	3.19	1/2	2	1 1/4	2	1/4	1 1/4
80	10.70	302418	300	NONE	317	24	46	49.13	21.00	3.13	1/2	2	1 1/4	2	1/4	1 1/4
80	10.70	302419	200	.18 X 13.5 X 30	257	24	46	51.25	21.00	3.19	1/2	2	1 1/4	2	1/4	1 1/4
80	10.70	302420	300	.18 X 13.5 X 30	354	24	46	51.19	21.00	3.13	1/2	2	1 1/4	2	1/4	1 1/4
120	16.04	302423	200	NONE	366	30	46	54.00	27.00	8.00	1/2	2	2	2	1/4	2
120	16.04	302424	200	.25 X 15 X 40	422	30	46	55.50	27.00	8.00	1/2	2	2	2	1/4	2
120	16.04	302425	300	.25 X 15 X 40	566	30	46	55.50	27.00	8.00	1/2	2	2	2	1/4	2

\*Tank weight pounds is calculated, may vary slightly.