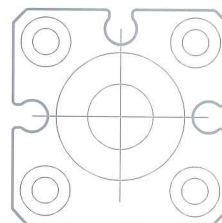
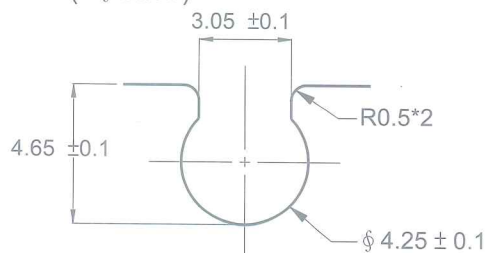


SPECIFICATION

TYPE	AJA - 07R	AJA - 07N	AJA - 07P
CHARACTERISTICS			
SWITCHING LOGIC	SPST Normally Open	Solid State Output, Normally Open	
SENSOR TYPE	Reed Switch	NPN Current Sinking	PNP Current Sourcing
OPERATING VOLTAGE	5~120V DC/AC	5~28V DC	
SWITCHING CURRENT	100 mA max.	200 mA max.	
SWITCHING RATING	10 W max.	6 W max.	
CURRENT CONSUMPTION	—	20 mA max. @ 24V (Switch Active)	18 mA max. @ 24V (Switch Active)
VOLTAGE DROP	2.5 V max. @ 40mA DC	0.5 V max. @ 200 mA (Resistive Load)	
LEAKAGE CURRENT	—	0.01 mA max.	
INDICATOR	Red LED	Red LED	Green LED
CABLE	2.8φ, 2C, PVC	2.8φ, 3C, PVC	
SENSITIVITY (NOTE 1.)	60 Gauss	40 Gauss	
MAX. SWITCHING FREQUENCY	1000 Hz	1000 Hz	
TEMPERATURE RANGE	-10~70 °C		
SHOCK (NOTE 2.)	30 G	50 G	
VIBRATION (NOTE 3.)	9 G		
ENCLOSURE CLASSIFICATION	IP 67 (NEMA 6)		
PROTECTION CIRCUIT	None	Power Source Reverse Polarity; Surge Suppression	
Connect Diagram			

APPLICABLY GROOVE(4 § SMC)



NOTE:

1. Measuring standard target: $\phi 15.5 * \phi 8 * 5t$ (Anisotropic Rubber Magnet).
2. Sin Wave / X · Y · Z 3 Directions / 3 Times Each Direction / 11mS Each Time.
3. Double Amplitude 1.5mm / 10Hz~55Hz~10Hz (Sweep 1min) / X · Y · Z 3 Directions / 1Hour Each Time.