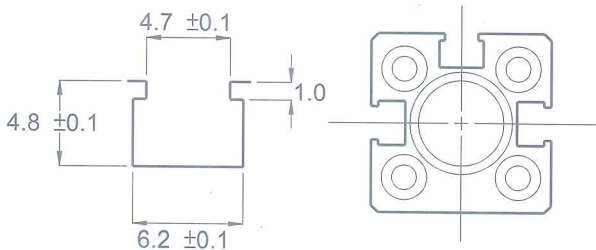


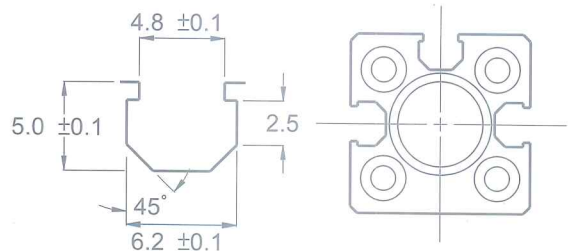
## SPECIFICATION

CHARACTERISTICS	AJA - 32R	AJA - 32N	AJA - 32P
SWITCHING LOGIC	SPST Normally Open	Solid State Output, Normally Open	
SENSOR TYPE	Reed Switch	NPN Current Sinking	PNP Current Sourcing
OPERATING VOLTAGE	5~240V DC/AC	5~28V DC	
SWITCHING CURRENT	100 mA max.	200 mA max.	
SWITCHING RATING	10 W max.	6 W max.	
CURRENT CONSUMPTION	—	19 mA max. @ 24V (Switch Active)	16 mA max. @ 24V (Switch Active)
VOLTAGE DROP	2.5 V max. @ 100mA DC	1.5 V max. @ 200 mA (Resistive Load)	
LEAKAGE CURRENT	—	0.01 mA max.	
INDICATOR	Red LED	Red LED	Green LED
CABLE	2.8φ, 2C, PVC	2.8φ, 3C, PVC	
SENSITIVITY (NOTE 1.)	—	40Gauss	
MAX. SWITCHING FREQUENCY	200 Hz	1000 Hz	
TEMPERATURE RANGE	-10~70 °C		
SHOCK (NOTE 2.)	30 G	50 G	
VIBRATION (NOTE 3.)	9 G		
ENCLOSURE CLASSIFICATION	IP 67 (NEMA 6)		
PROTECTION CIRCUIT	None	Power Source Reverse Polarity; Short Circuit; Surge Suppression	
Connect Diagram			

### APPLICABLY GROOVE(CKD)



### APPLICABLY GROOVE(TAIYO)


**NOTE:**

1. Measuring standard target:  $\phi 15.5 * \phi 8 * 5t$  (Anisotropic Rubber Magnet).
2. Sin Wave / X、Y、Z 3 Directions / 3 Times Each Direction / 11mS Each Time.
3. Double Amplitude 1.5mm / 10Hz~55Hz~10Hz (Sweep 1min) / X、Y、Z 3 Directions / 1Hour Each Time.