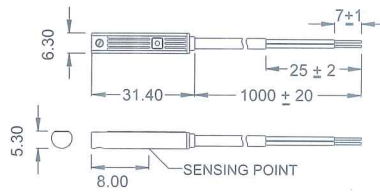
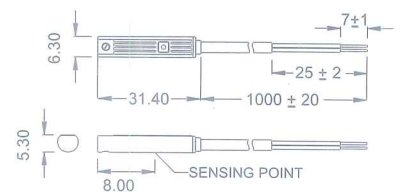
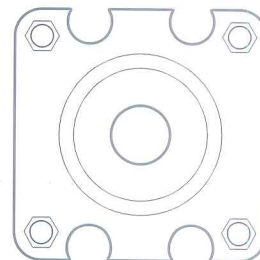
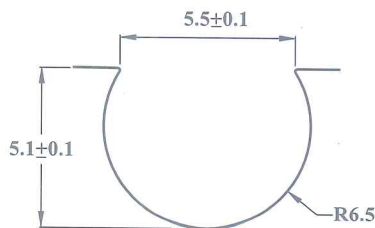

AJA-50R

AJA-50N, AJA-50P


SPECIFICATION

CHARACTERISTICS	TYPE	AJA - 50R	AJA - 50N	AJA - 50P
SWITCHING LOGIC		SPST Normally Open	Solid State Output, Normally Open	
SENSOR TYPE		Reed Switch	NPN Current Sinking	PNP Current Sourcing
OPERATING VOLTAGE		5~240V DC/AC	5~28V DC	
SWITCHING CURRENT		100 mA max.	200 mA max.	
SWITCHING RATING		10 W max.	6 W max.	
CURRENT CONSUMPTION		—	19 mA max. @ 24V (Switch Active)	16 mA max. @ 24V (Switch Active)
VOLTAGE DROP		2.5 V max. @ 100mA DC	1.5 V max. @ 200 mA (Resistive Load)	
LEAKAGE CURRENT		—	0.01 mA max.	
INDICATOR		Red LED	Red LED	Green LED
CABLE		2.8φ, 2C, PVC	2.8φ, 3C, PVC	
SENSITIVITY (NOTE 1.)			40Gauss	
MAX. SWITCHING FREQUENCY		200 Hz	1000 Hz	
TEMPERATURE RANGE			-10~70°C	
SHOCK (NOTE 2.)		30 G	50 G	
VIBRATION (NOTE 3.)			9 G	
ENCLOSURE CLASSIFICATION			IP 67 (NEMA 6)	
PROTECTION CIRCUIT		None	Power Source Reverse Polarity; Short Circuit; Surge Suppression	
Connect Diagram				

APPLICABLY GROOVE

NOTE:

1. Measuring standard target: $\phi 15.5 * \phi 8 * 5t$ (Anisotropic Rubber Magnet).
2. Sin Wave / X、Y、Z 3 Directions / 3 Times Each Direction / 11mS Each Time.
3. Double Amplitude 1.5mm / 10Hz~55Hz~10Hz (Sweep 1min) / X、Y、Z 3 Directions / 1Hour Each Time.